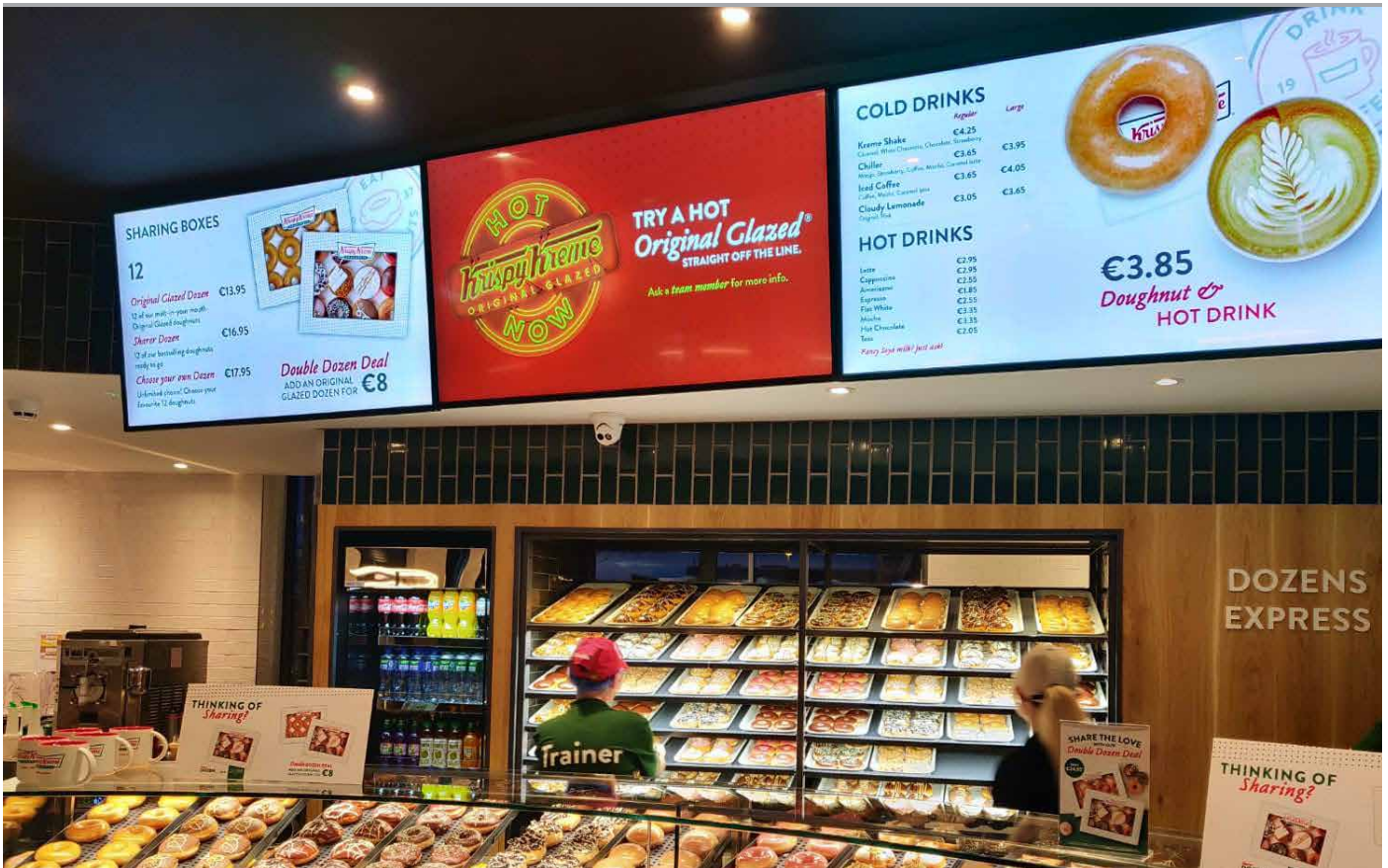


Network Digital Menu Boards

32" | 43" | 50" | 55"



Complete Package Solution

We have combined a 24/7 commercial display, a network Android media player, one year free CMS software and a library of pre-designed templates for the ultimate package solution.



Save time and Money

1st Year Free Software Subscription

The first year of using our cloud based CMS is absolutely free. You can also purchase 3 additional year's access at the point of purchase or make a one off payment to have access for life.



24/7 Commercial Use

These displays use a commercial grade LCD panel and LED backlight. They have the ability to be in constant use 24/7 for over 70,000 hours and have no external buttons or controls to avoid tampering.



Exclusive Template Library

As well as being able to create your own layouts you can choose from our exclusive library of pre-design editable templates. Choose an existing layout, add your own images and information then publish it to your screen.



Other Features

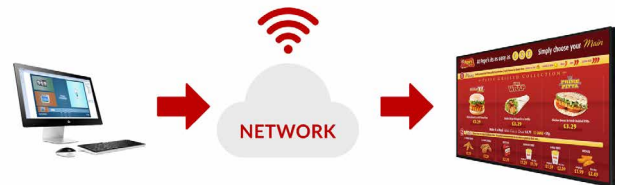
450cd/m² IPS Panel

Commercial grade IPS technology accurately displays image quality and colour depth with no fall-off in colour accuracy. These panels are designed to achieve ultimate lifelike colour temperature when used in either landscape or portrait.



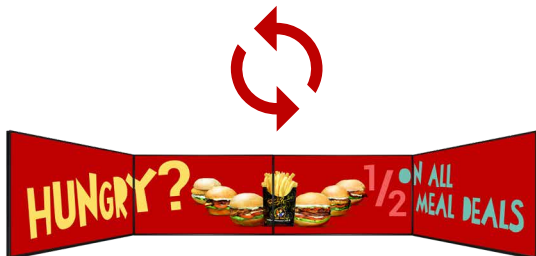
Update Instantly and From Anywhere

No special software installation or dedicated PC is required, simply login to our online your portal and update your screens from anywhere in the world with an internet connection.



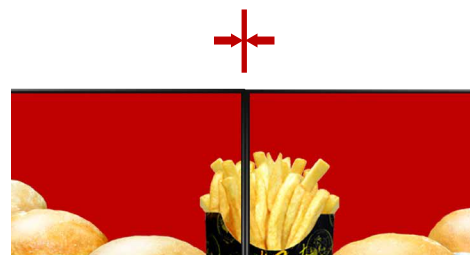
Multi Screen Synchronisation

Create stunning content across multiple displays or just have your menus change at the same time.



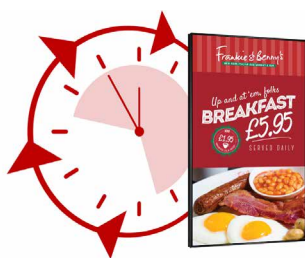
Narrow Bezel

The slim border on the Digital Menu Boards allows your menu to take centre stage especially when multiple displays are placed side by side.



Power Timer

The eco-friendly power timer allows you to assign daily or weekly on and off times for your screen meaning that it is only in use when it needs to be; improving your environmental efficiency.



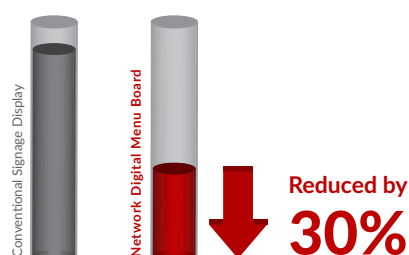
Wide Viewing Angle

Thanks to the IPS technology these displays provide fantastic image quality with a remarkable viewing angle of 178° in both landscape and portrait.



Low Power Consumption

The LED backlight technology provides improved brightness and contrast. Their lifespan is drastically improved to over 70,000 hours and the power consumption is reduced by around 30%.

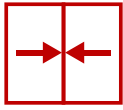


Plug and Play Backup

If you lose your internet connection you can still update the screen using a USB stick to keep things simple.



Key Features



NARROW BEZEL



INTEGRATED ANDROID MEDIA PLAYER



IPS PANEL



24/7 COMMERCIAL GRADE



LANDSCAPE OR PORTRAIT ORIENTATION

INTEGRATED SPEAKERS

LED BACKLIGHT

BUILT IN WIFI



MY SIGNAGE PORTAL
SOFTWARE LICENSE
1 YEAR FREE

ONE YEAR FREE SOFTWARE SUBSCRIPTION

2 Sides Choose from our range of delicious Sides. T

3 x TENDER STRIPS £2.29

3 x PEPE'S WINGS £2.29

NARROW BEZEL

Pepe's Piri Piri

OPENING TIMES
Monday to Friday 11am - 11pm
Saturday 12pm - 11pm
www.pepes.co.uk

LANDSCAPE OR PORTRAIT ORIENTATION

Express Beverages

Chocolate

INTEGRATED NETWORK ANDROID MEDIA PLAYER

Specification Table

		32 Inch	43 Inch	50 Inch	55 Inch
Panel	Resolution	1920x1080			
	Display Area (mm)	703.4x397.9	941.2x529.42	1073x604	1209.6x680.4
	Bezel Size (mm)	Top/Left/Right: 9.3 Bottom: 14.8	Top/Left/Right: 11.4 Bottom: 18.18	Top/Left/Right: 11.5 Bottom: 16.5	Top/Left/Right: 11.5 Bottom: 17
	Aspect Ratio	16:9			
	Brightness (cd/m ²)	450			
	Colour	16.7M			
	Viewing Angle	178°			
	Contrast Ratio	4000:1			
Audio	Speaker Type	5W, 8Ω (x2)			
AV Inputs	Video	HDMI, VGA			
	Audio	Audio Socket (3.5mm)			
Power	Power Consumption (W)	38	45	55	65
	Input Voltage	AC110~240V (50Hz~60Hz)			
Mechanical	Unit Size (WxHxD mm)	722x422x65	964x559x60	1096x632x60	1232x708.9x59.3
	Package Size (WxHxD mm)	862x555x215	1105x698x210	1238x760x195	1385x845x190
	VESA Holes (mm)	400x200/500x200	400x200	400x400/400x300/400x200	
	Net Weight (kg)	9.15	15.85	23	28
	Gross Weight (kg)	12.25	19.75	28.9	34.4
Environmental	Operating Temperature	0 °C to 50 °C			
	Storage Temperature	-30°C to 60°C			
	Operating Humidity	10% to 80%			
	Storage Humidity	5% to 95%			
Computer	Media Formats	Video (MPG, AVI, MP4, RM, RMVB, TS), Audio (MP3, WMA), Image (JPG, GIF, BMP, PNG)			
	Media Resolution	1920x1080/1080x1920			
	Internal Memory	6GB			
	CPU	Quad-Core Cortex-A17@1.61GHz			
	GPU	Mali-T760 MP4 @600MHz			
	RAM	2GB DDR3			
	ROM	8GB NAND			
	USB	USB2.0 HOST (x2)			
	LAN	10/100M Ethernet			
	Wi-Fi	802.11b/g/n/ac			
Accessories	OS	Android 5.1.1			
	Graphic Engine	OpenGL ES 1.1/2.0/3.0/3.1, OpenCL 1.1, Renderscript, Direct3D 11.1			
	Included	Scheduling Software, Remote Control, User Manual			
Warranty	Optional	Wall Mount, Floor Stand/Trolley, Ceiling Mount, Table Stand			
	Warranty Period	3 Year Warranty			
	Technical Support	Lifetime			

Errors and omissions excepted

