

BRINGING **IDEAS** TO LIFE

Welcome to the world of
LED Digital Signage





DIGITAL SIGNAGE INCREASES RETAIL SALES

200%

INCREASE
AUDIENCE
RETENTION
RATE

63%

MORE PEOPLE
SAY THAT DIGITAL
SIGNAGE
CATCHES
THEIR EYE

30%

INCREASE
SALES
WHEN USING
DIGITAL SIGNAGE

26%

INCREASE FOOTFALL
DUE TO DIGITAL
SIGNAGE
INSTALLATIONS
AT RETAIL STORES

60%

BUYING DECISIONS
ARE MADE AT
POINT OF SALE



“

Our high resolution LED screens are the next step in digital display technology. As a highly engaging form of digital media, it grabs attention and delivers a message with impact and vibrancy.

Unlike traditional display forms, LED screens do not get washed out by bright ambient light and are completely seamless. Providing you with one seamless wall of video that would make your message completely unmissable.

”

-TABLE OF CONTENTS-

OVERVIEW	6
INDUSTRY STATISTICS FOR RETAILERS USING DIGITAL SIGNAGE	6
PRODUCT RANGE	7
TRAINING	8
SURVEYS	8
INSTALLATION	9
WARRANTY	10
CONTENT MANAGEMENT SYSTEM	12
HARDWARE & TECHNICAL SPECIFICATIONS	14
FINE PITCH LED PRESENTATION VIDEO WALL	15
INDOOR LED VIDEO WALL	20
OUTDOOR LED VIDEO WALL	25

OVERVIEW



- OVERVIEW -

A digital signage solution to fulfil current and future requirements as outlined below:

- To enhance the customer shopping experience with visually stimulating signage which will increase engagement
- To utilise data capture and feedback to drive future marketing strategies
- Replace printed posters with profitable advertising space
- Display engaging content to showcase products and special offers
- Content Management System (CMS) to give autonomy from a central location to manage multiple remote screens ensuring consistency of brand and messaging
- To support enhanced technical applications planned for the future

- INDUSTRY STATISTICS FOR RETAILERS USING DIGITAL SIGNAGE -

- 26% rise in footfall where digital signage is deployed
- Digital Signage adds an upswing in overall sales volume by 31.8%
- 8/10 customers have entered a store because of a digital sign catching their interest
- Over 40% of shoppers say that digital displays can change what they buy because relevant information is served close to the point of purchase.
- 19% of viewers made an unplanned purchase of something promoted digitally in a retail setting
- If given a choice, 42% of retail video viewers would prefer to shop at stores that have video displays
- Digital Signage reduces perceived waiting times at checkout by as much as 35%
- 29% of customers find digital menus influential for purchase of product
- Digital media in public venues reaches more customers than videos on the Internet or Facebook.
- 4 out of 5 brands noticed a 33% increase in sales after adopting digital signage

-PRODUCT RANGE-

HARDWARE

At Media Group we offer an extensive range of digital screen hardware, allowing us to provide the right solution for the right retail outlet. Only when we have factored the store position, sunlight direction, window size and shop interior will we make a recommendation for the most suitable display.

From our UK logistics facility, screens can be dispatched within 72 hours of order. Quantities of 50+ would be subject to approximately a 60 day lead time.

Units that meet your current brief include:

FINE PITCH LED PRESENTATION VIDEO WALL

- Super Fine HD Pixel Pitch
- All-in-One Meeting Room Display
- Powerful Presentation Display
- Easy installation

PAGE15



INDOOR LED VIDEO WALL

- Stunning Image Quality
- High Brightness
- Easy Front Maintenance
- End-to-End Project Management

PAGE20



OUTDOOR LED VIDEO WALL

- Stunning Image Quality
- Lightweight and Slim Design
- IP Rated Weatherproof Enclosure
- End-to-End Project Management

PAGE25



Please refer to product specifications included for a complete product range. Hardware is subject to a full 3 year warranty and life-time technical support.

“**40%**
OF SHOPPERS

say that digital displays
can change what they buy
because all of the relevant
information is served close
to the point of purchase...

”

- TRAINING -

At Media Group, we supply solutions, not just products, which is why we offer a free tailored training programme at our custom built showroom, to ensure users are fully confident in creation and deployment.

Additional support includes:

- An integrated support section with comprehensive tutorial videos and how to guides can be found at: <http://www.mysignageportal.com/support.html>
- Free life-time technical support is included via telephone or email, provided by the manufacturer

Onsite training can be arranged and has a 2 tier level of service:

- Basic system overview including: template and playlist creation, multi-zone layouts, publishing, scheduling and device management. £250.00 per day + mileage at UK standard rates
- Full system overview with in-depth training on all aspects of the CMS including: organisational management, grouping, user management and 'touch' where applicable



Home

Features

Support

Login

Training

Free Technical Support

Learning how to use My Signage Portal is easy. With a user friendly interface our aim is to make My Signage Portal accessible to everyone. To do this we provide FREE technical support. We do offer a number of free tools however to help you get started. Our [Video Guide](#) and [FAQ](#) should provide you with everything you need to teach yourself how to use the software as well as [downloading User Manuals](#) for both the software and compatible My Signage Portal players/screens. If you are still unsure of what to do you can [request free technical support](#) from our UK based technical support team.



Video Tutorials



FAQ



Documentation/
Downloads



Request Support

Bespoke Training Packages

To get the most out of My Signage Portal we are able to offer a specialised training sessions with one of our trained support technicians. These can be delivered remotely FREE of charge or onsite and can help you get the most out of My Signage Portal and achieve your goals no matter how simple or complex your requirements.

To enquire about one of these training sessions please complete the form below.

-INSTALLATION-

Our experienced and approved fitting crews are based in the Midlands, North and South and are managed by the principal contractor who has overall responsibility for the installation.

Installations include:

- Mechanical fixing of all bracketry and hanging systems
- Installation of hardware
- Screen connection to the site network and CMS portal

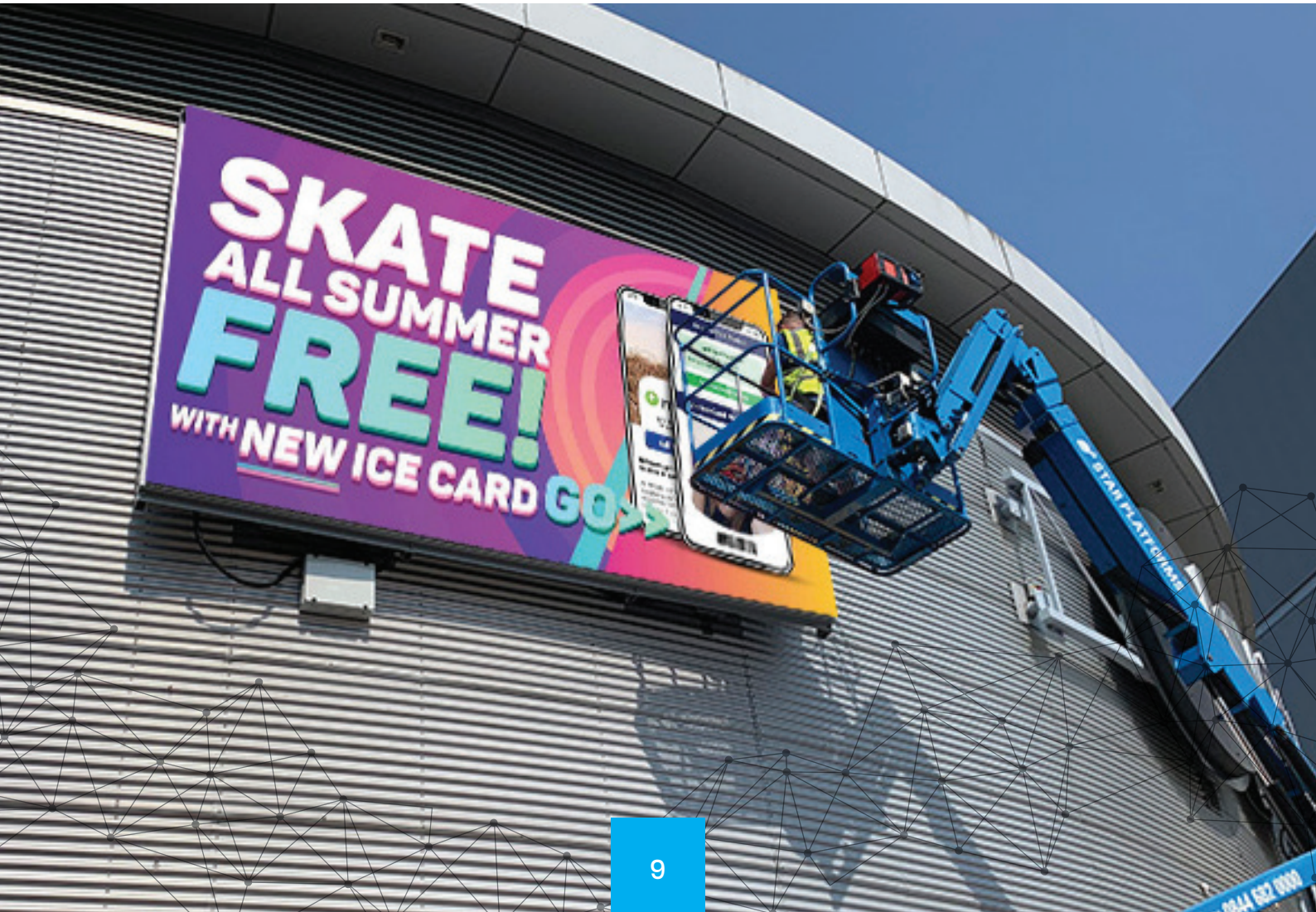
Agreed content will be published to screens once we are notified of works completion.

Please note: Deployment is subject to the final agreed proposal and site survey results. For multi-screen installations or short deadlines additional crews may be required.

Our installations teams also have specialist capability in electrical and data cabling.

HEALTH AND SAFETY

A comprehensive set of Risk Assessments and Method Statements (RAMS) will be completed for each site including relevant certificates and insurances. ALL MEDIA GROUP FITTING CREWS ARE FULLY BRIEFED PRIOR TO INSTALLATION. Samples are available on request



-WARRANTY (UK MAINLAND)-

- Covers hardware failure but excludes accidental damage or user error
- 14 day returns policy
- Free lifetime telephone support
- Any suspected hardware failure should be reported to us first
- We will then provide telephone technical support to determine hardware failure; hardware failure must be confirmed by us
- Standard 3 year warranty (for all listed products purchased after 18/01/2016)
- All screen sizes up to and including 55" are covered by a swap-out or collect and return service. Once hardware failure has been determined by us over the phone the screen should be repackaged using the original packaging
- At this point we, at our discretion, will either:
 - Arrange for collection of the faulty screen by a courier service, then once the screen is back with us it will either be repaired or replaced with a new unit
 - or
 - A replacement screen will be sent out and a courier service will be used to collect the faulty screen
- All deliveries and collections will be at the cost of us
- If the screen is not packaged correctly no liability will be taken by us if the product is damaged during transit
- If the screen is returned in full working order no liability will be taken by us and any costs incurred will be passed on to the customer

UK MAINLAND ONLY:

Screens sizes above and exclusive of 55" and freestanding (L-series) products are covered by an on-site service. Once hardware failure has been determined by us over the phone we will arrange for technician(s) to make an on-site visit to repair or replace the faulty screen.

- The screen(s) must be in a location accessible to our technician(s) and in no circumstances would our staff be expected to remove screens or disassemble non-standard installations or constructions or be expected to work above ground level
 - Where no genuine hardware failure has occurred a call out charge of at least £150 (+VAT) is payable for each visit
 - For customised or out of stock items the turnaround period is dependent upon factors such as, but not limited to, availability, production and shipping
-

CONTENT MANAGEMENT SYSTEM



-CONTENT MANAGEMENT SYSTEM [CMS]-

Our cloud based digital CMS offers users flexible access to the portal. Campaign creation, edits and deployment can be made from anywhere that has an internet connection. And the simplicity of the software means that only minimal IT support is required.

The user friendly interface enables quick and easy publishing of content to 1 or 500+ screens.

Features include:

- Rapid publishing
- Multi-zone layouts
- Screen synchronization
- Custom backgrounds and fonts
- Remote commands
- User management
- Reporting
- Scrolling text/RSS feeds
- Live webpage input
- Touch playlist creation

More information at www.mysignageportal.com

OVERVIEW

BACKGROUNDS

Set an image or a colour to frame your media zones.

Static Text

Allows you to input custom text values. Edit the font, colour and size of your text.

WEBPAGES

Allows you to display a live webpage such as a social media page or live web feed.

IMAGES

Multiple images playing in a continuous rolling loop.

VIDEOS

Multiple videos playing in a continuous rolling loop.

LOGO

Brand your layout with your logo which will stay on top of all other zones.

DATE

Display the date in a variety of formats, sizes and in whatever colour you want.



OFFICE DOCUMENTS & PDFs

Display PDF files alongside Microsoft Word, Excel and PowerPoint files.

SCROLLING TEXT

Display a ticker tape message or live RSS feed. From here you can adjust the font, size, colour, speed and direction of the text.

TIME

Display the time in a variety of formats, sizes and in whatever colour you want.

BROADCAST LIVE TV (ONLY COMPATIBLE WITH PPCNET-LIVE)

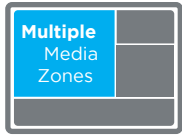
Transform existing screens into cloud based Digital Advertising Displays with a live television input. Simply connect a TV set-top box or desired input source into the media player via HDMI. Then connect the media player to a screen via HDMI and you can control everything via our CMS. It couldn't be simpler to integrate live TV with Digital Signage.

WEATHER WIDGET

Display a real time weather forecast for up to the next three days.

FEATURES

CREATE CUSTOM LAYOUTS



This feature allows you to design your own layout with different media zones for your images, videos, webpages, time, date and also allows you to add a scrolling message or RSS feed. You can even give your layout a corporate “skin” to go around your media zones.

CONNECTIVITY



Connect your Android Network Screens to the internet wirelessly via Wi-Fi or via a Local Area Connection. If an internet connection is not available a 3G router can be incorporated into the screen, meaning that we can provide an integrated network solution for any location.

UPDATE FROM ANYWHERE



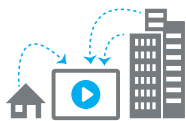
Content can be uploaded and managed from anywhere in the world via our web portal, simply login, upload your images and videos to our secure server and send them directly to your screens.

SCHEDULE PLAYLISTS



Display what you like, when you like. Create playlists that will automatically display your desired content a pre-determined times and dates. Whatever your scheduling requirements, our system can support them.

ULTIMATE REMOTE CONTROLS



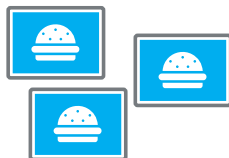
Thanks to the all-in-one nature of the screens you can remotely control functions such as adjusting your screen’s brightness, rebooting or formatting your screen, playing and stopping content, adjusting the volume and scheduling on/off times; a truly centralised solution.

MANAGE USERS



Create as many bespoke user accounts as you like. You may wish to limit some functions of the software to specific users, for example you may wish to allow a receptionist to upload media and have access to the screen in the reception area but nothing else - our system allows full user rights control.

MULTI SCREEN SYNCHRONISATION



You can synchronise the content across multiple screens that are connected to the same network. This is ideal for advertising networks on escalators or along lengthy corridors.

RSS FEEDS



Display your RSS feed in the form of a scrolling text message. This can be anything from up-to-date news and weather to the latest movie reviews and currency exchange rates.

HARDWARE & TECHNICAL SPECIFICATIONS



es Analysis

in the sales portfolio in
the last 12 months to
your 100% of
of your commitments



FINE PITCH LED PRESENTATION VIDEO WALL TECHNICAL SPECIFICATION

OVERVIEW

110"

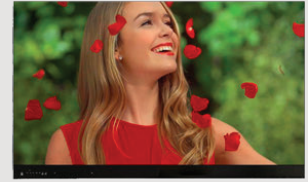
138"

165"

220"

SUPER FINE HD PIXEL PITCH

All the screen sizes available have a full High Definition resolution and a standard 16:9 aspect ratio. This fine pixel pitch, combined with the advantage of not having any unsightly bezels, make these displays the ultimate in premium presentation video walls.



ALL-IN-ONE MEETING ROOM DISPLAY

The Fine Pitch LED Presentation Video Wall combines the best quality LED technology on the market with a sophisticated Android based PC. This provides an integrated solution for most cases without the need for messy cables or additional devices.



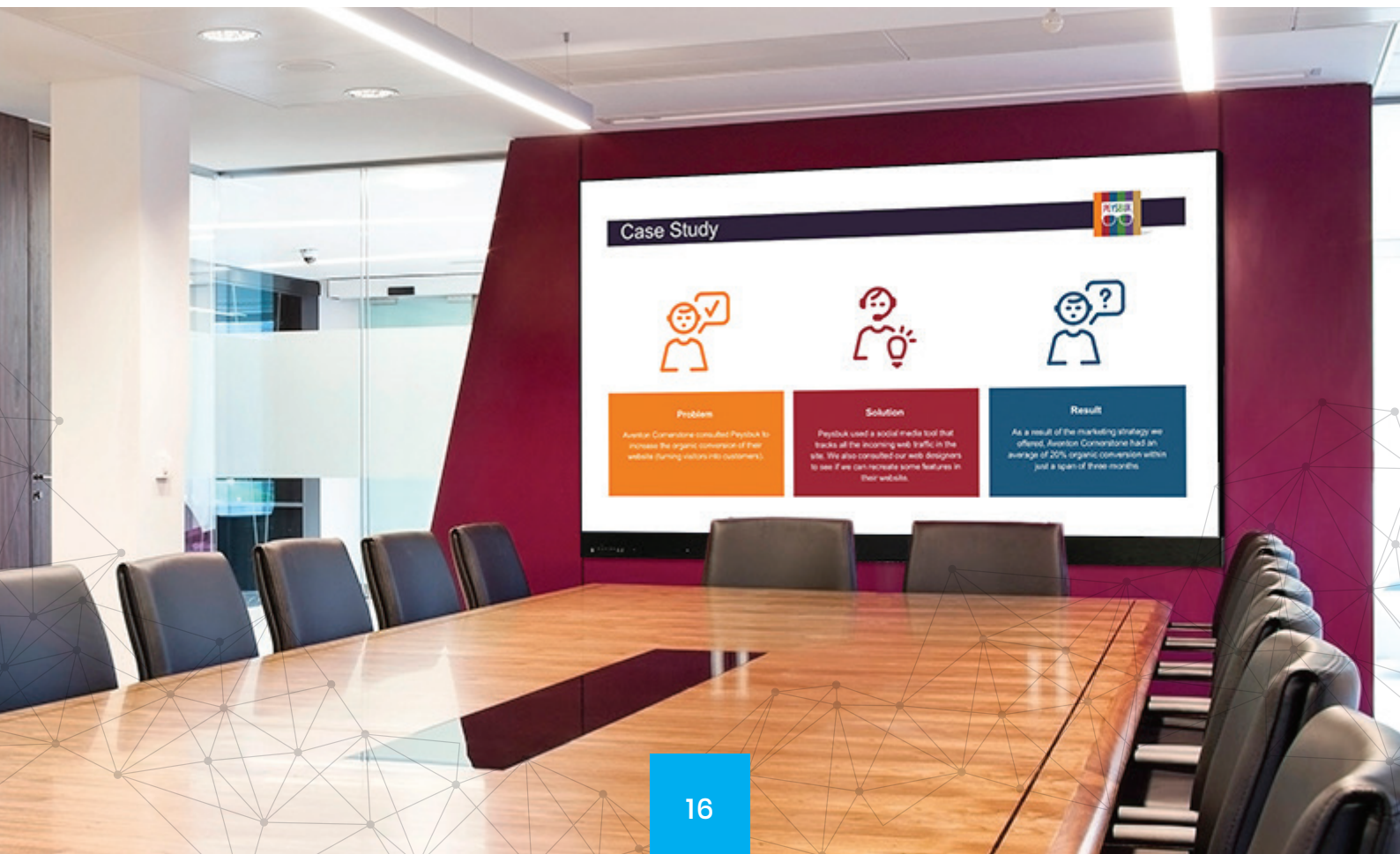
POWERFUL PRESENTATION DISPLAY

Designed with middle to large sized meeting rooms in mind this is the ultimate presentation tool. Wow attendees as you wirelessly mirror and file share between your devices and the presentation screen. Featuring easy access front ports for connecting your laptop, remote video conferencing and multi-window splicing for maximum user engagement.



EASY INSTALLATION

Installation of the Fine Pitch LED Presentation Video Wall is quick and easy thanks to its light and compact design. Unlike other LED Video Walls this solution is a complete out-of-the-box display so assembly is much easier than usual. It also comes fully colour celebrated.



FEATURES

Adjustable Backlight

The Fine Pitch LED Presentation Video Wall is bright enough for all ambient lighting conditions, but the screen can be adjusted manually to suit user preferences. If your conference or meeting room is quite dark then you can reduce the backlight brightness to improve overall readability.



Easy Front Maintenance

Through an intuitive and easy-to-use maintenance system the LED Video Wall can be serviced from the front of the display. The LED modules can be removed quickly and efficiently for convenient maintenance.



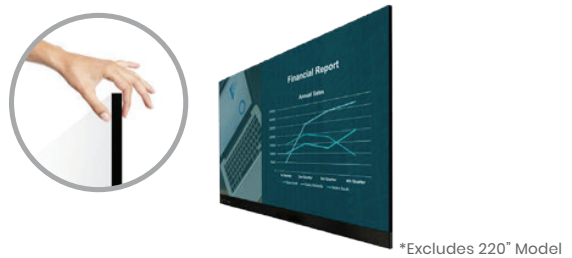
SMD Technology

SMD (Surface Mounted Diode) LED technology is the optimum form for LED Video Walls. Combining three miniature LEDs of different colours in one unit enables fine pixel pitches with perfect colour uniformity.



Lightweight and Slim Design

Despite their large size the Fine Pitch LED Presentation Video Wall has a compact design with a slim depth of just 38.5mm* and a lightweight cabinet for reduced stress on the mounting wall.



*Excludes 220" Model

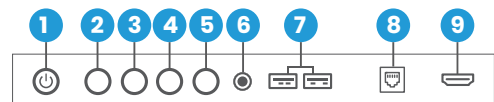
Wide Viewing Angle

Thanks to the LED technology these displays provide fantastic image quality with a remarkable viewing angle of 160°.



Easy Access Front Ports and Controls

The Fine Pitch LED Video Wall has a variety of easy to access controls and ports on the front of the display including a HDMI and 2 x USB ports.



- 1 Power Switch
- 2 Switch Signal
- 3 + Brightness
- 4 - Brightness
- 5 Standby
- 6 Audio Out
- 7 USB x 2
- 8 LAN*
- 9 HDMI*

*On underside of display

Advertising Display Functionality

Although it's designed as a presentation solution, this LED Video Wall can also be used as an indoor LED advertising display thanks to the built in Android PC.



Optional Floor Stand

If you do not have the desired wall space available an optional floor stand can be included to mount the LED Video Wall on.



KEY FEATURES



SMD TECHNOLOGY



SLIM/LIGHTWEIGHT DISPLAY



RUGGED ENCLOSURE



PRE COLOUR CALIBRATED



HD DISPLAY



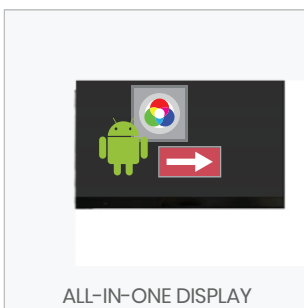
EASY ACCESS FRONT PORTS



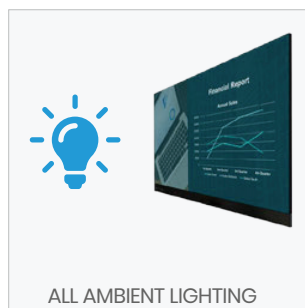
SEAMLESS VIDEO WALL



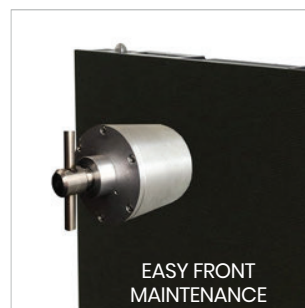
BUILT IN ANDROID



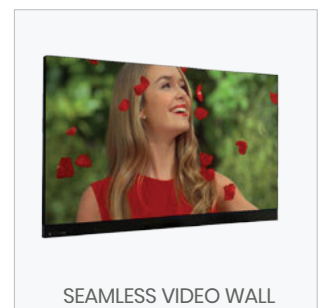
ALL-IN-ONE DISPLAY



ALL AMBIENT LIGHTING



EASY FRONT MAINTENANCE



SEAMLESS VIDEO WALL

TECHNICAL SPECIFICATION

		110 inch	138 inch	165 inch	220 inch
LED	Pixel Pitch (mm)	1.2	1.5	1.9	2.5
	Resolution	1920x1080			
	Display Area (mm)	2440x1373	3050x1716	3660x2059	4880x2745
	Aspect Ratio	16:9			
	Brightness (cd/m ²)	100 ~500		100~ 600	
	Refresh Rate (Hz)	1920~3840			
	Grayscale	14 Bit			
	Viewing Angle	160°			
	Contrast Ratio	5000:1			
	Maintenance	Front Access Only			
AV Inputs	Front Inputs	USB x 2, HDMI			
Power	Input Voltage	AC110~240V (50Hz~60Hz)			
	Average Power Consumption	850W	1,020 W	1,040 W	1,740 W
	Maximum Power Consumption	2,500W	3,000W	3,060W	5,120 W
Mechanical	Unit Size (WxHxD mm)	2453x1503x38.5	3063x1846x38.5	3673x2189x38.5	4893x2875x60
	Package Size (WxHxD mm)	TBC	TBC	TBC	TBC
	VESA Holes (mm)	400x400/400x600	600x600/600x800	800x600	800x600
	Net Weight (kg)	134	201	282	562.5
	Gross Weight (kg)	TBC	TBC	TBC	TBC
Environmental	Operating Temperature	-10°C to 40 °C			
	Operating Humidity	10% to 85%			
	IP Rating	IP30			
Computer	CPU	ARM Cortex A72, Cortex A53, 2.0GHz			
	GPU	ARM Mali-T860 MP4			
	Memory	DDR3 2G, 4G			
	Storage	eMMC 8G			
	LAN	100M/1000M			
	Wi-Fi	802.11ac			
	OS	Android 7.1			
Accessories	Included	TBC			
	Optional	Floor Stand			
Warranty	Warranty Period	3 Year Warranty			
	Technical Support	Lifetime			





INDOOR LED VIDEO WALL TECHNICAL SPECIFICATION

OVERVIEW

P1.9

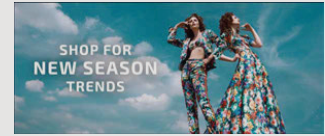
P2.6

P3.1

P3.9

STUNNING IMAGE QUALITY

State of the art SMD-LED technology delivers stunning image quality across the seamless display; certain to garner attention. With advanced video processing technology to produce accurate and vibrant colours with no distortion.



HIGH BRIGHTNESS

Equipped for all indoor ambient light conditions the 800cd/m² high brightness display is sure to shine bright and demand your audience's attention.



800cd/m²



EASY FRONT MAINTENANCE

Through an intuitive and easy-to-use maintenance system the LED Video Wall can be serviced from the front of the display. The LED modules can be removed quickly and efficiently for convenient maintenance.



END-TO-END PROJECT MANAGEMENT

Every LED Video Wall is unique and each comes with its own challenges. We are here to advise and guide you through every step - from design to installation and even providing maintenance we can provide full end-to-end project management where required.



Design

>>



Installation

>>



Maintenance



FEATURES

Lightweight and Slim Design

Each cabinet weighs just 24kg and has a depth of 40mm meaning that the reduced weight reduces stress on the mounting structure.



Ultra High Contrast Ratio

With an ultra-high contrast ratio of 6,000:1 the LED Video Walls deliver deeper blacks, vivid colours and clear visibility across the display without sacrificing brightness.



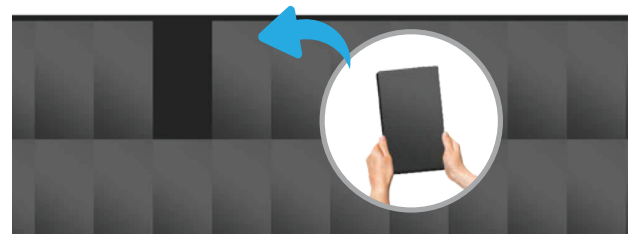
Fanless Design

The Indoor LED Video Walls are noise free while in operation thanks to their fanless design. Unlike outdoor applications, which involve lots of ambient noise, indoor projects require a silent solution.



Easy Installation

Their light and compact design as well as magnetic modules, positioning pins and simple cabinet structure make them ideal for either permanent installations or rental jobs.



Remote Updates from the Cloud

Take complete control of your LED Video Wall's content with our CMS system. Publish and monitor your content from anywhere in the world via our online portal.



Optimised Indoor Viewing Distances

The Indoor LED Video Walls are designed for close range viewing distances with a variety of pixel pitch options depending on your budget and requirements.



Complete Quality Control

Every step, from production to installation, goes through a strict quality control procedure while quality calibration guarantees consistent image quality across the whole display.



Bespoke Video Wall Display

Make the most of their modular design as you sculpt the LED Video Wall to fill your space and stand out from the crowd.



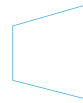
KEY FEATURES



SMD TECHNOLOGY



MODULAR DESIGN



SEAMLESS VIDEO WALL



ULTRA HIGH CONTRAST RATIO



QUICK AND EASY INSTALL



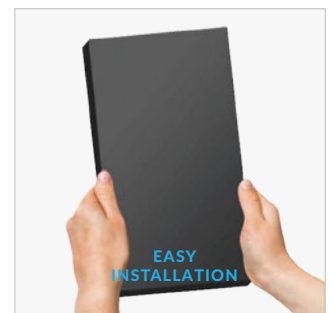
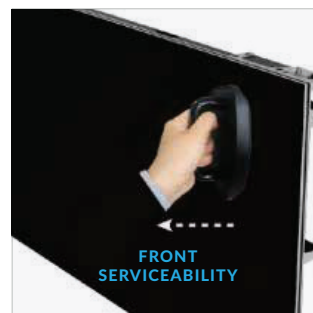
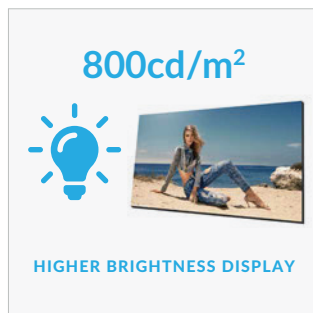
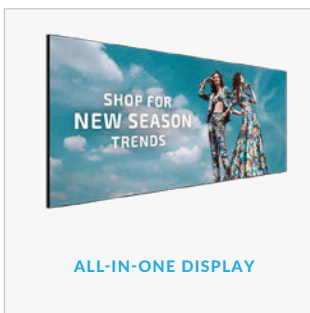
LIGHTWEIGHT DESIGN



LOW HEAT EMISSIONS



EASY TO USE CMS



TECHNICAL SPECIFICATION

		P1.9	P2.6	P3.1	P3.9
LED Display	Pixel Pitch (mm)	1.9mm	2.6mm	3.1mm	3.9mm
	LED Type	Black SMD2020 3-in-1			
	Pixel configuration	1R1G1B			
	Brightness (Calibrated)	800 cd/m ²			
	Refresh rate	≥1920 Hz			
	Contrast Ratio	6000:1			
	Viewing angle - Horizontal	160°			
	Viewing angle - Vertical	160°			
	Processing	14 bit			
	Frame rate	60 fps			
	Maintenance	Front & Rear service			
Cabinet	Module Resolution (px)	128x128	96x96	80x80	64x64
	Module Size (mm)	250x250			
	Cabinet Resolution (px)	256x256	192x192	160x160	128x128
	Cabinet Size (mm)	500x500x80			
	Net weight (Kg)	26			
Power	Input Voltage	AC220/110 ± 10%, 47-63Hz			
	Average Power Consumption	200W/m ²			
	Maximum Power Consumption	624W/m ²			
Environmental	IP Rating	IP40			
	Operating Temperature	-10°C to +40°C			
	Operating Humidity	10% to 90%			
	Lifetime	100,000 hours			
Accessories	Included	TBC			
	Optional	TBC			
Warranty	Warranty Period	3 Year Warranty			
	Technical Support	Lifetime			





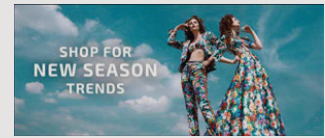
OUTDOOR LED VIDEO WALL TECHNICAL SPECIFICATION

OVERVIEW

P6 P10

STUNNING IMAGE QUALITY

State of the art SMD-LED technology delivers stunning image quality across the seamless display; certain to garner attention. With advanced video processing technology to produce accurate and vibrant colours with no distortion.



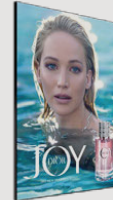
LIGHTWEIGHT AND SLIM DESIGN

Each cabinet weighs 28kg and has a depth of 100mm making these screens much easier to install. The lighter weight reduces stress on the mounting structure.



IP RATED WEATHERPROOF ENCLOSURE

Designed with a robust aluminium enclosure to give protection from the all wet weather conditions. The outer casing is IP-rated which means it also keeps out airborne swarf, dust and other particles.



Protection from the weather!
IP65/54



END-TO-END PROJECT MANAGEMENT

Every LED Video Wall is unique and each comes with its own challenges. We are here to advise and guide you through every step - from design to installation and even providing maintenance we can provide full end-to-end project management where required.



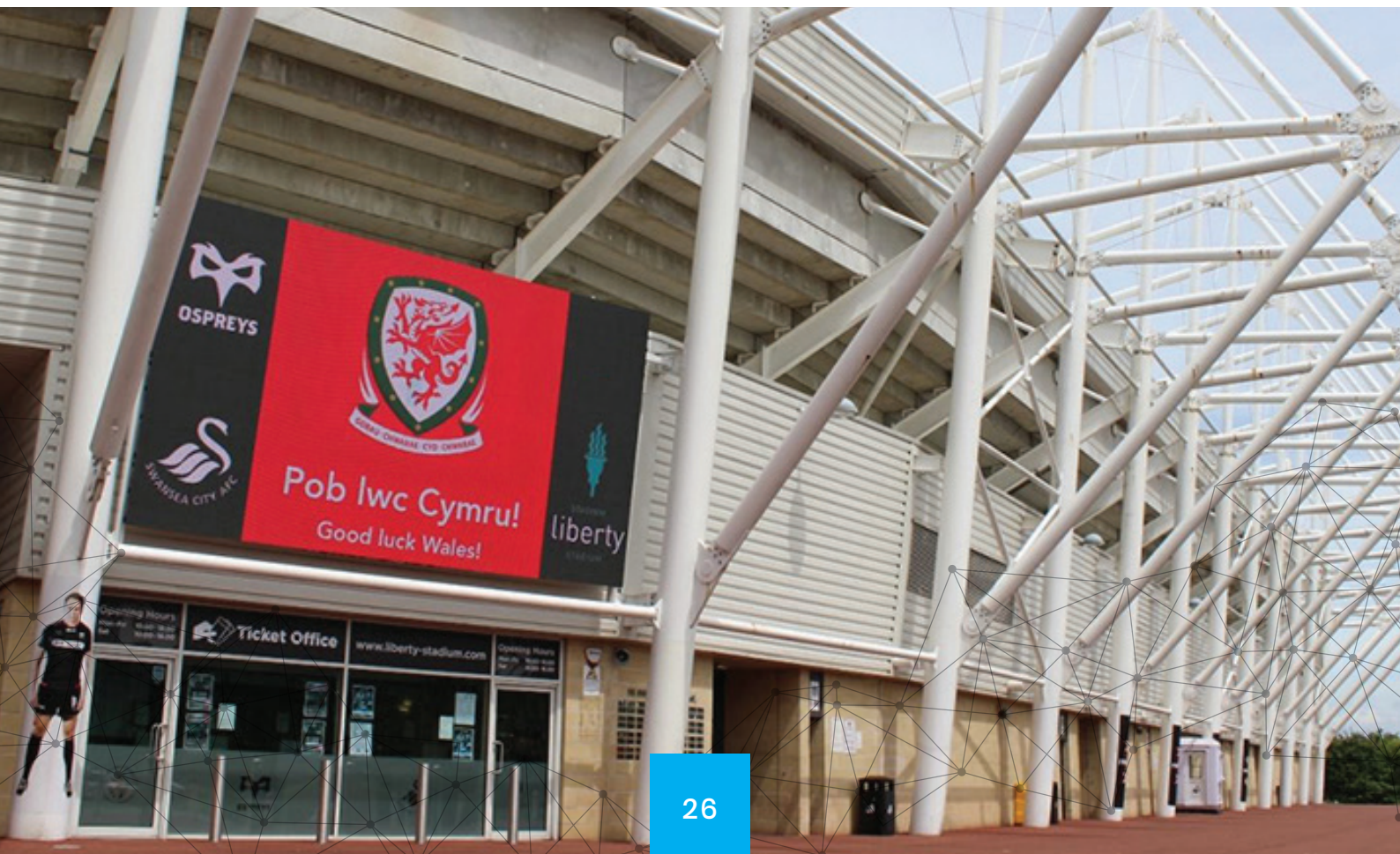
Design



>> Installation



>> Maintenance



FEATURES

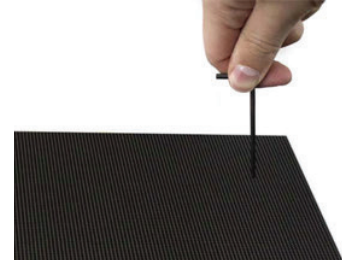
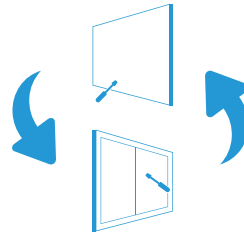
Outstanding High Brightness

With an incredible brightness level of 6,000cd/m² the LED Video Wall has outstanding visibility. The display is sunlight readable even in direct sunlight instantly catching attention from viewers ensuring your content is always seen.



Front or Rear Maintenance

Through an intuitive and easy-to-use maintenance system the LED Video Wall can be serviced from either the front of the display or the rear. The LED modules can be removed quickly and efficiently for convenient maintenance.



Optimised Outdoor Viewing Distances

The Outdoor LED Video Walls are designed for longer viewing distances with multiple pixel pitch options depending on your budget and requirements.



Easy Installation

Their light and compact design as well as magnetic modules, positioning pins and simple cabinet structure make them ideal for either permanent installations or rental jobs.



Remote Updates from the Cloud

Take complete control of your LED Video Wall's content with our CMS system. Publish and monitor your content from anywhere in the world via our online portal.



Complete Quality Control

Every step, from production to installation, goes through a strict quality control procedure while quality calibration guarantees consistent image quality across the whole display.



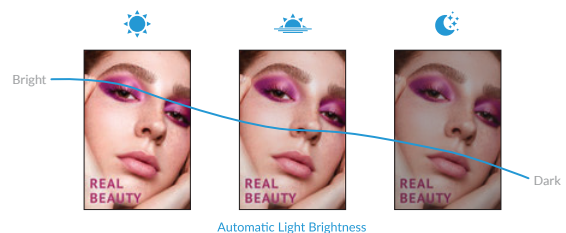
Ultra High Contrast Ratio

With an ultra-high contrast ratio of 6,000:1 the LED Video Walls deliver deeper blacks, vivid colours and clear visibility across the display without sacrificing brightness.



Optional Ambient Light Sensor

Ensure that the brightness of your video wall is always at an optimum level. This feature is ideal for displays that are road facing; which need to have variable brightness depending on the time of day.



KEY FEATURES



SMD TECHNOLOGY



SUNLIGHT READABLE



WEATHERPROOF



MODULAR DESIGN



QUICK AND EASY INSTALL



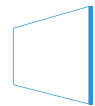
LIGHTWEIGHT DESIGN



LOW HEAT EMISSIONS



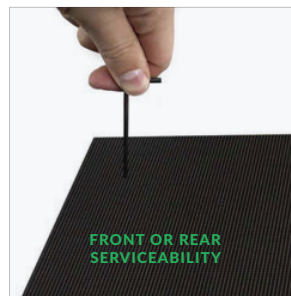
SEAMLESS VIDEO WALL



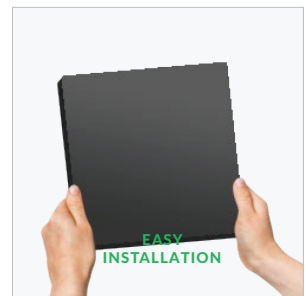
STUNNING IMAGE QUALITY



WEATHERPROOF



FRONT OR REAR SERVICEABILITY



EASY INSTALLATION

TECHNICAL SPECIFICATION

		P6	P10
LED Display	Pixel Pitch (mm)	6.67mm	10mm
	LED Type	SMD 2727 3-in-1	
	Pixel configuration	1R1G1B	
	Brightness (cd/m ²)	≥6,000	
	Refresh rate	≥1920 Hz	
	Contrast Ratio	6,000:1	
	Viewing angle - Horizontal	140°	
	Viewing angle - Vertical	140°	
	Processing	14 bit	
	Frame rate	60 fps	
	Maintenance	Front & Rear Access	
	Cabinet	Cabinet Size (mm)	960x960x120
Net Weight (Kg)		28	
Power	Input Voltage	AC220/110 ± 10%, 47-63Hz	
	Average Power Consumption	265W/m ²	
	Maximum Power Consumption	750W/m ²	
Environmental	IP Rating - Front	IP65	
	IP Rating - Rear	IP54	
	Operating Temperature	-20°C to +50°C	
	Operating Humidity	10% to 95%	
	Lifetime	100,000 hours	
Accessories	Included	TBC	
	Optional	TBC	
Warranty	Warranty Period	3 Year Warranty	
	Technical Support	Lifetime	







mediagroup

info@media-group.co.uk

digital-screens.co.uk

