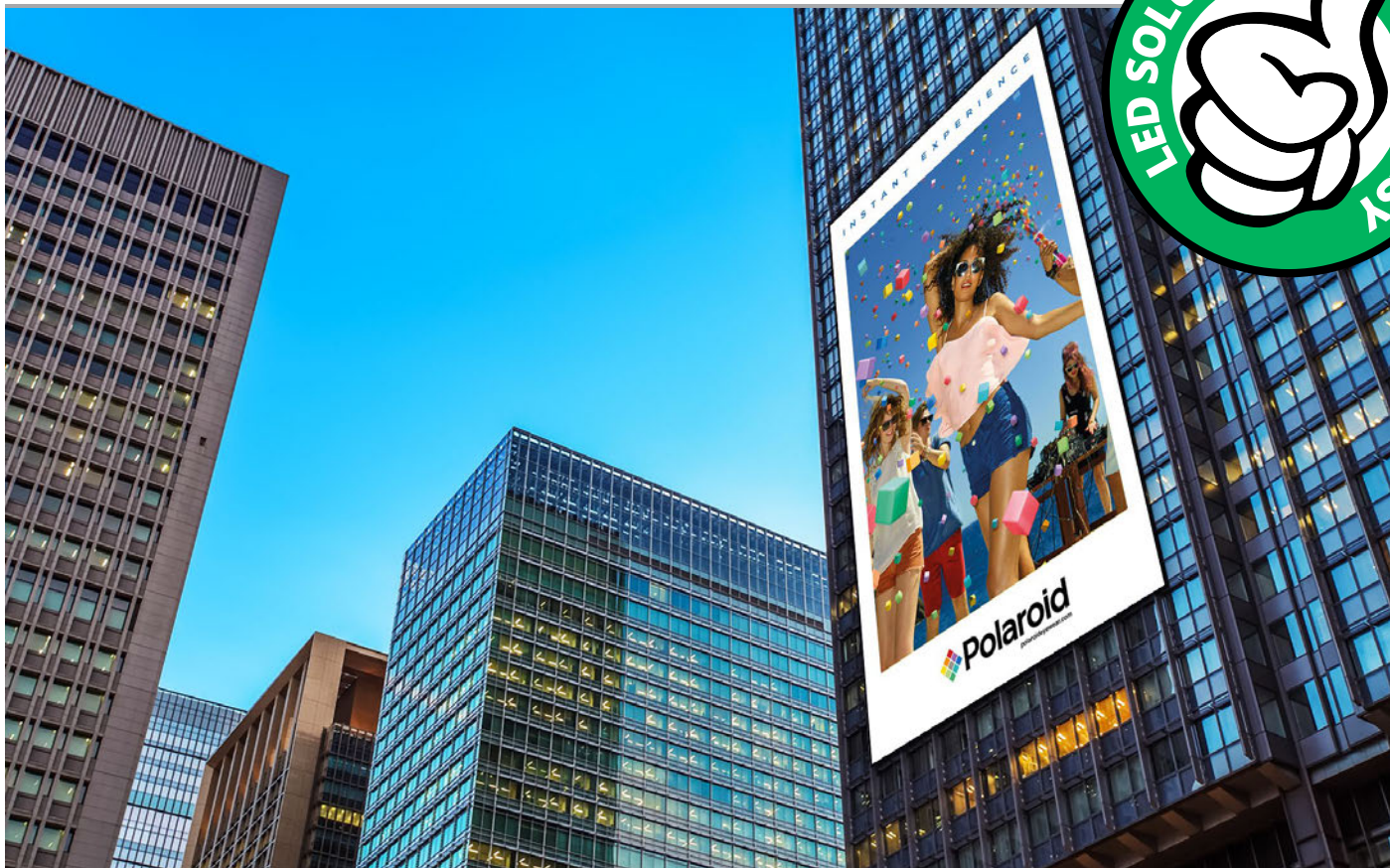


Outdoor LED Video Wall

P6 | P10



Stunning Image Quality

State of the art SMD-LED technology delivers stunning image quality across the seamless display; certain to garner attention. With advanced video processing technology to produce accurate and vibrant colours with no distortion.



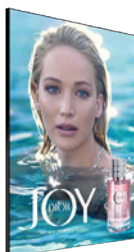
Lightweight and Slim Design

Each cabinet weighs 28kg and has a depth of 100mm making these screens much easier to install. The lighter weight reduces stress on the mounting structure.



IP Rated Weatherproof Enclosure

Designed with a robust aluminium enclosure to give protection from the all wet weather conditions. The outer casing is IP-rated which means it also keeps out airborne swarf, dust and other particles.



End-to-End Project Management

Every LED Video Wall is unique and each comes with its own challenges. We are here to advise and guide you through every step - from design to installation and even providing maintenance we can provide full end-to-end project management where required.



Design >> Installation >> Maintenance

Other Features

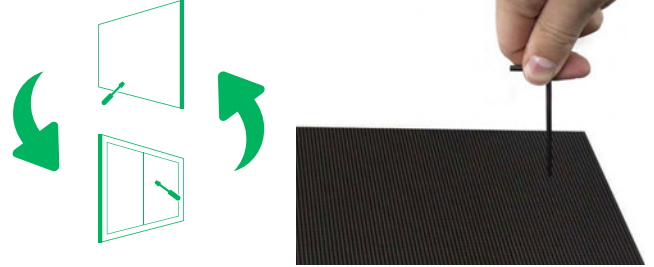
Outstanding High Brightness

With an incredible brightness level of 6,000cd/m² the LED Video Wall has outstanding visibility. The display is sunlight readable even in direct sunlight instantly catching attention from viewers ensuring your content is always seen.



Front or Rear Maintenance

Through an intuitive and easy-to-use maintenance system the LED Video Wall can be serviced from either the front of the display or the rear. The LED modules can be removed quickly and efficiently for convenient maintenance.



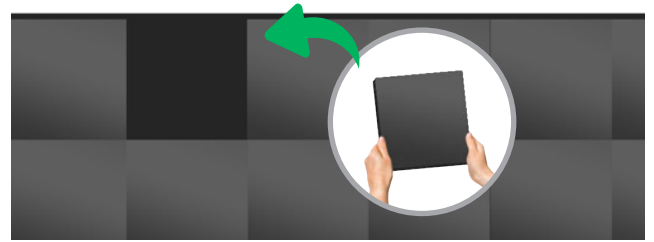
Optimised Outdoor Viewing Distances

The Outdoor LED Video Walls are designed for longer viewing distances with multiple pixel pitch options depending on your budget and requirements.



Easy Installation

Their light and compact design as well as magnetic modules, positioning pins and simple cabinet structure make them ideal for either permanent installations or rental jobs.



Remote Updates from the Cloud

Take complete control of your LED Video Wall's content with our CMS system. Publish and monitor your content from anywhere in the world via our online portal.



Complete Quality Control

Every step, from production to installation, goes through a strict quality control procedure while quality calibration guarantees consistent image quality across the whole display.



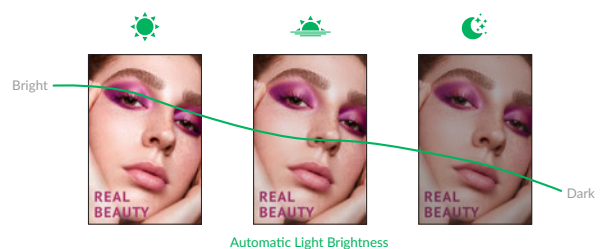
Ultra High Contrast Ratio

With an ultra-high contrast ratio of 6,000:1 the LED Video Walls deliver deeper blacks, vivid colours and clear visibility across the display without sacrificing brightness.



Optional Ambient Light Sensor

Ensure that the brightness of your video wall is always at an optimum level. This feature is ideal for displays that are road facing; which need to have variable brightness depending on the time of day.



Key Features



SMD TECHNOLOGY



SUNLIGHT READABLE



WEATHERPROOF



MODULAR DESIGN

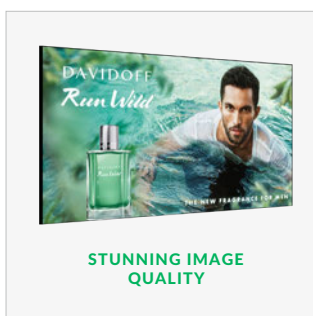


QUICK AND EASY INSTALL

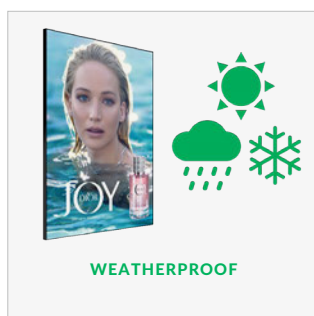
LIGHTWEIGHT DESIGN

LOW HEAT EMISSIONS

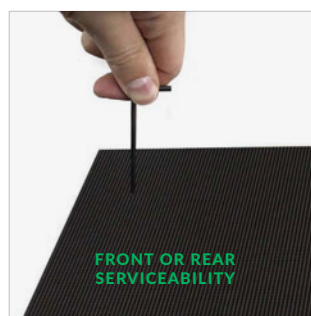
SEAMLESS VIDEO WALL



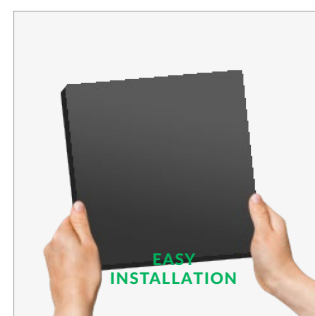
STUNNING IMAGE QUALITY



WEATHERPROOF



FRONT OR REAR SERVICEABILITY



EASY INSTALLATION

Specification Table

		P6	P10
LED Display	Pixel Pitch (mm)	6.67mm	10mm
	LED Type	SMD 2727 3-in-1	
	Pixel configuration	1R1G1B	
	Brightness (cd/m ²)	≥6,000	
	Refresh rate	≥1920 Hz	
	Contrast Ratio	6,000:1	
	Viewing angle - Horizontal	140°	
	Viewing angle - Vertical	140°	
	Processing	14 bit	
	Frame rate	60 fps	
	Maintenance	Front & Rear Access	
Cabinet	Cabinet Size (mm)	960x960x120	
	Net Weight (Kg)	28	
Power	Input Voltage	AC220/110 ± 10%, 47~63Hz	
	Average Power Consumption	265W/m ²	
	Maximum Power Consumption	750W/m ²	
Environmental	IP Rating - Front	IP65	
	IP Rating - Rear	IP54	
	Operating Temperature	-20°C to +50°C	
	Operating Humidity	10% to 95%	
Lifetime	100,000 hours		
Accessories	Included	TBC	
	Optional	TBC	
Warranty	Warranty Period	3 Year Warranty	
	Technical Support	Lifetime	

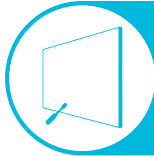


Why Choose Our Commercial Display Solutions?



Lifetime Technical Support

From the moment you receive your product, throughout the duration of your warranty and even after your warranty has expired we are here to support you. If you require any assistance setting up or using your product, or have any problems at all, we can provide free technical support via telephone and email.



On-site Support and Maintenance*

If needed, we can provide an installation service for any of our products. We can also set up service-level agreements for larger projects that require maintenance contracts.



Extended Warranty*

All of our commercial display products come with a 3 year commercial warranty as standard but if you want to extend this you can upgrade this to cover a 5 year period at point of purchase.



Training

As well as providing free remote CMS training sessions and webinars we can also visit you to deliver bespoke training for our software and hardware*.



Advanced Replacements†

Should your display suffer from any kind of hardware failure during the warranty period we will send you an advanced replacement and arrange for your old display to be collected, free of charge. This ensures no downtime where you are without a screen.



Custom Product Testing & Configuration

If you need us to test third party software or a website, or configure your screen in a particular way before it is dispatched (e.g. in a particular orientation or network mode), we can do so to make your life easier.



3D Rendering

Want to know how a particular screen will look once installed? Send us a photo of the location and we will create a 3D rendering of any screen in situ to help you to visualise how amazing it will look.



Logistics Support

We hold more stock in our UK warehouse than any other manufacturer so we can help you meet tight deadlines. For last minute orders we can also offer special express or morning delivery options*. We also carry out UK based quality control checks on every display before it leaves our warehouse.



Project Support

If you need to loan a sample unit to test we'd be more than happy to arrange this. We can also provide a rental service for temporary projects*.



Customisation*

Your display can be customised to suit your requirements by adding your logo or printed graphics or even tailoring the colour of a display. We can also carry out hardware modifications to existing products or manufacture bespoke solutions for special projects.



Extras*

As well as being able to provide accessories and add-ons, such as extra remote controls, NUC PCs and video wall controllers, we can also supply custom made flight cases which are great if a display needs to be moved safely from place to place.

†UK mainland only

*These particular services may incur additional charges